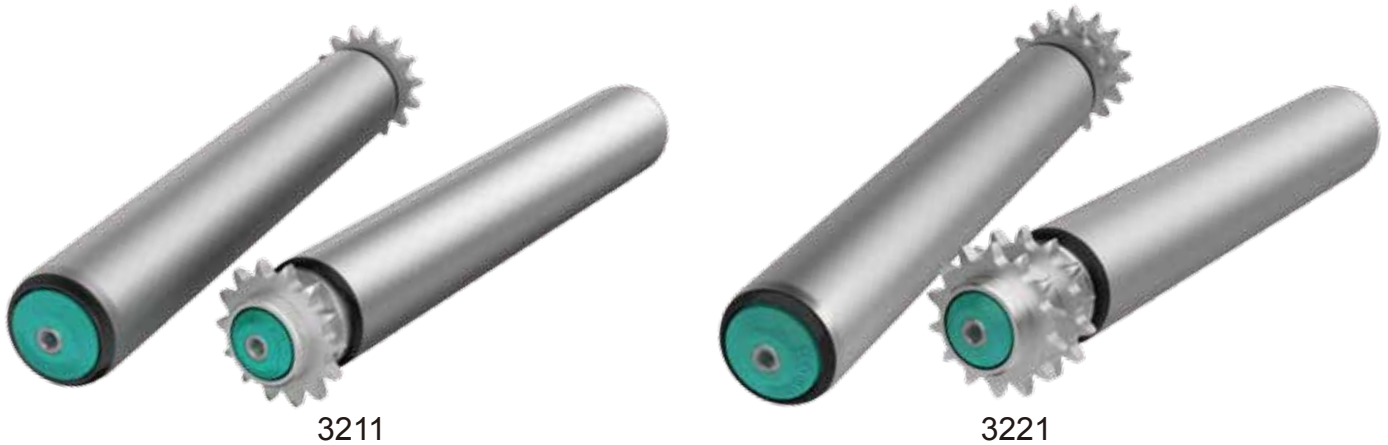


## 3211/3221 Series Accumulating Conveyor Roller



# 3211/3221 Series Steel Single/Double Sprocket Accumulating Roller

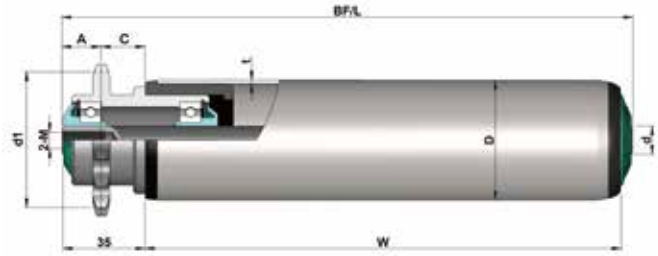
### Product Features

- With typical friction driven accumulation, the accumulation force is associated to duty capacity.
- The bearing end cap consists of a precision ball bearing, a polymer housing and end cap seal. Combined they provide an attractive, smooth and quite running roller.
- The design of the end cap protects the bearings by providing excellent resistance to dust and splashed water.
- Utilizes durable, steel sprockets.
- Temperature range:  $-5^{\circ}\text{C} \sim +40^{\circ}\text{C}$ .
- Humidity available  $\geq 30\%$

Please contact us if humidity out of this scope.

### Specifications

Bearing Unit	
Bearing housing	Polyamide, black
End cap	Polypropylene, Damon green
Precision ball bearing	6002
Drive Element	
Sprocket	Steel

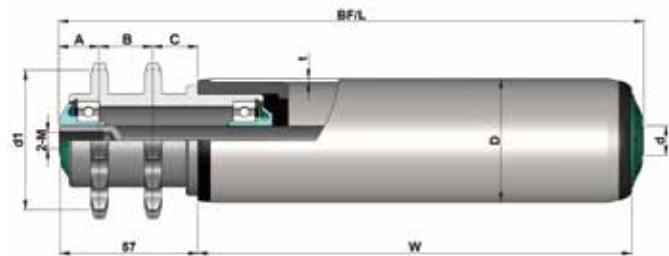


## 3211 Series Internal Thread

Tube Dia.(D)	Shaft Dia.(d)		Sprocket Type	A	C	d1
Φ50	Φ12/15	BF/L=W+41	08B14T	17	18.5	Φ57.07
Φ60	Φ12/15	BF/L=W+41	08B14T	17	18.5	Φ57.07

Tube	D*T	Shaft Dia.(d)	
		Φ12 ( M8x15 )	Φ15 ( M10x20 )
Steel, zinc plated	Φ50x1.5	3.211.SHC.ACC	3.211.SHC.ADC
	Φ60x2.0	○	○
Stainless steel	Φ50x1.5	3.211.NHC.BCC	3.211.NHC.BDC
	Φ60x2.0	○	○

○-Available configuration



## 3221 Series Internal Thread

Tube Dia.(D)	Shaft Dia.(d)		Sprocket Type	A	B	C	d1
Φ50	Φ12/15	BF/L=W+63	08B14T	17	22	18.5	Φ57.07
Φ60	Φ12/15	BF/L=W+63	08B14T	17	22	18.5	Φ57.07

Tube	D*T	Shaft Dia.(d)	
		Φ12 ( M8x15 )	Φ15 ( M10x20 )
Steel, zinc plated	Φ50x1.5	3.221.SHC.ACC	3.221.SHC.ADC
	Φ60x2.0	3.221.SOC.ACC	3.221.SOC.ADC
Stainless steel	Φ50x1.5	3.221.NHC.BCC	3.221.NHC.BDC
	Φ60x2.0	3.221.NOC.BCC	3.221.NOC.BDC